


## Mouse GM-CSF protein , His tag (Animal-Free)

Cat #: PRP1151

Size: 5 ug/20 ug/100 µg/1 mg

### Product Information

	<b>Product Name:</b> Mouse GM-CSF protein , His tag (Animal-Free)		
<b>REF</b>	<b>Catalog Number:</b> PRP1151	<b>LOT</b>	<b>Lot Number:</b> Refer to product label
	<b>Purity:</b> > 98 % as determined by SDS-PAGE		
	<b>Storage:</b> Store at -20°C		<b>Preparation method:</b> <i>E.coli</i>
	<b>Shipping:</b> The product is shipped at ambient temperature.		

**Background:** Granulocyte-macrophage colony-stimulating factor (GM-CSF) is one of an array of cytokines with pivotal roles in embryo implantation and subsequent development. Several cell lineages in the reproductive tract and gestational tissues synthesise GM-CSF under direction by ovarian steroid hormones and signalling agents originating in male seminal fluid and the conceptus. The pre-implantation embryo, invading placental trophoblast cells and the abundant populations of leukocytes controlling maternal immune tolerance are all subject to GM-CSF regulation. GM-CSF stimulates the differentiation of hematopoietic progenitors to monocytes and neutrophils, and reduces the risk for febrile neutropenia in cancer patients.

**Sequence:** Amino acid sequence derived from Mouse GM-CSF (Ala18-Lys141)(P01587) was expressed with 6xHis tag at the N-terminus.

**Protein length:** The recombinant Mouse GM-CSF consists of 124 amino acids and predicts a molecular mass of 15.1 KDa.

**Biological Activity:** Measure by its ability to induce proliferation in FDC-P1 cells. The ED<sub>50</sub> for this effect is <50 pg/mL.

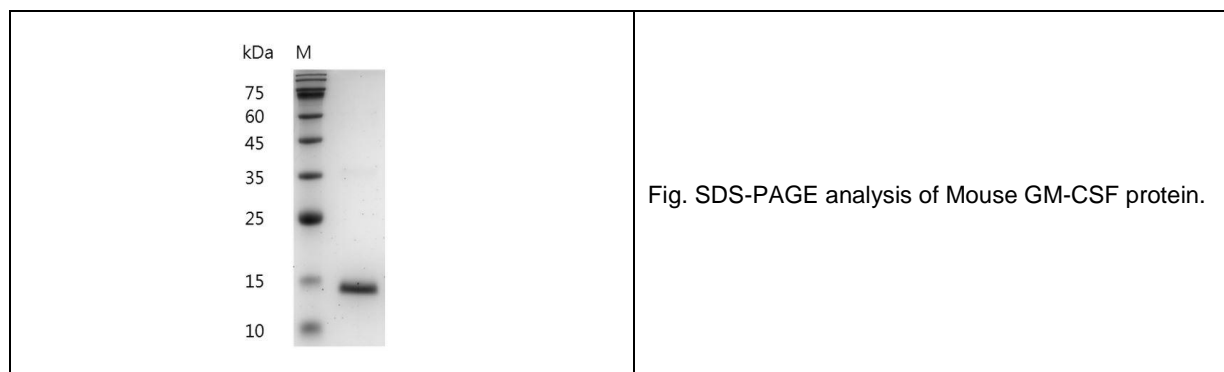
**Endotoxin:** < 0.1 EU per µg of the protein as determined by the LAL method.

**Formulation:** Lyophilized from sterile PBS, pH 7.4.

**Storage Instructions:** Lyophilized protein product should be stored desiccated below -18°C. Upon reconstitution, the protein should be stored at 4°C between 2-7 days and for future use below -18°C. For long term storage it is recommended to add a carrier protein (5% HSA , 10%FBS or 0.1%BSA). Please prevent freeze-thaw cycles.

**Usage notes:** Always centrifuge tubes before opening. It is recommended to reconstitute the lyophilized recombinant Mouse GM-CSF protein to a concentration of 0.1-1 mg/mL in sterile ddH<sub>2</sub>O, and keep at room temperature for at least 20 min to fully

dissolve. Please avoid vortex vigorously.



**Note:** The product listed herein is for research use only and is not intended for use in human or clinical diagnosis. Suggested applications of our products are not recommendations to use our products in violation of any patent or as a license. We cannot be responsible for patent infringements or other violations that may occur with the use of this product.